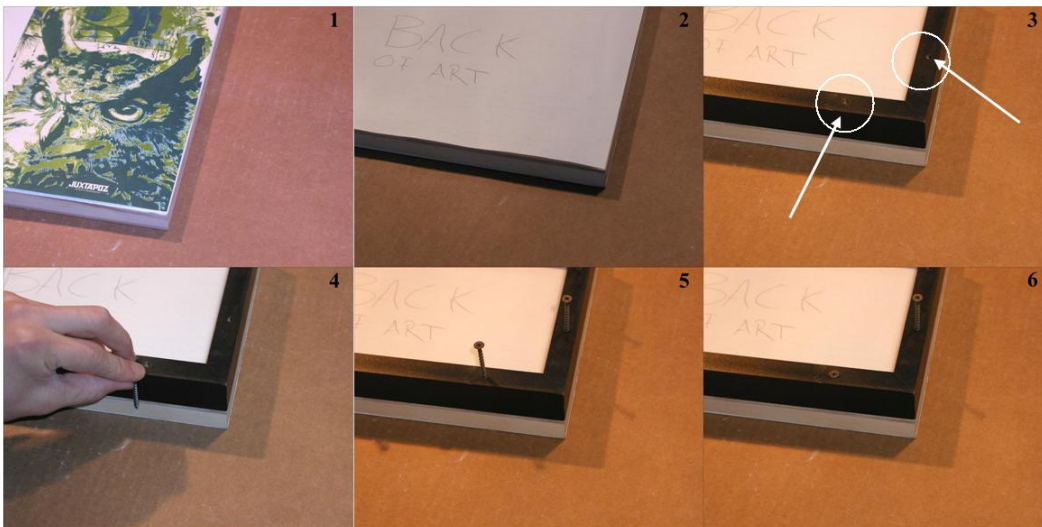
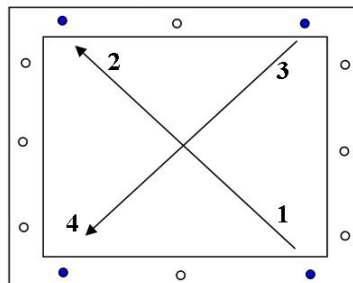
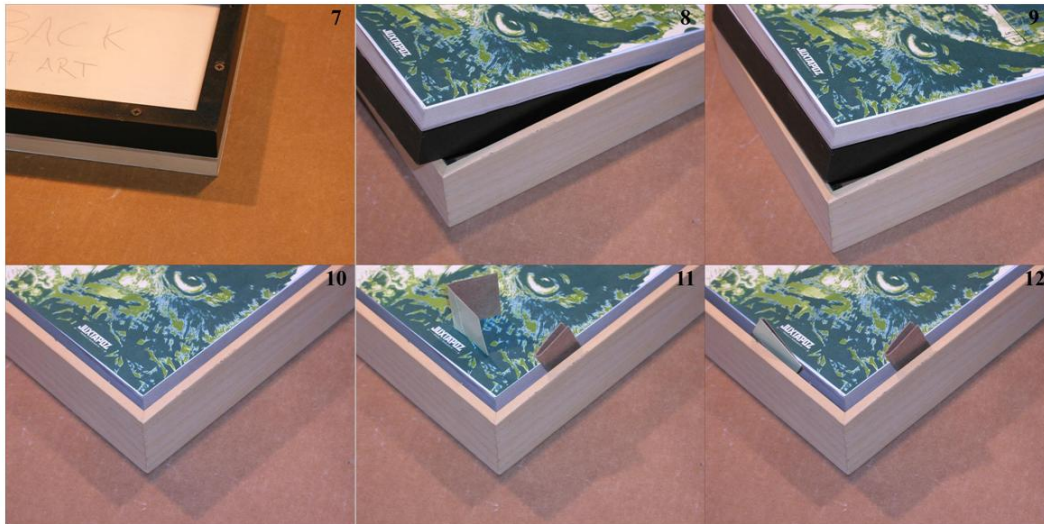


Instructions for attaching a frame

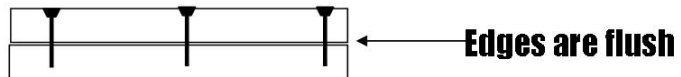


- 1) Here is the artwork to be framed.
- 2) Flip the art over face down onto a soft clean surface.
- 3) If there is an inset (spacer) place it over the back of the art with the pre drilled holes facing up toward you.
- 4) The inset will be attached with flush set wood screws. (see image #19)  
Place the screw outside the inset to be sure that it is long enough to penetrate two thirds or so into the depth of the art. We also do this to make sure the screw is not too long, so we can prevent penetrating through the face of the artwork.
- 5) Now that we are sure we have the correct screws, place all the screws into the pre drilled holes on the back of the inset.
- 6) Carefully drive the screws through the inset into the back of the art. Take care that the inset is attached while flush to the edges of the art. In the figure below I am attempting to illustrate that the screws are driven through the inset in a certain order. Start at the corners then fill in the middle.



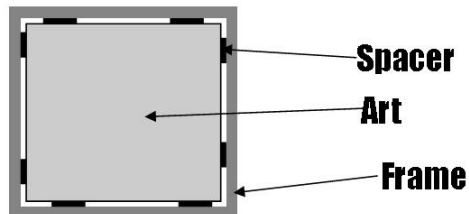


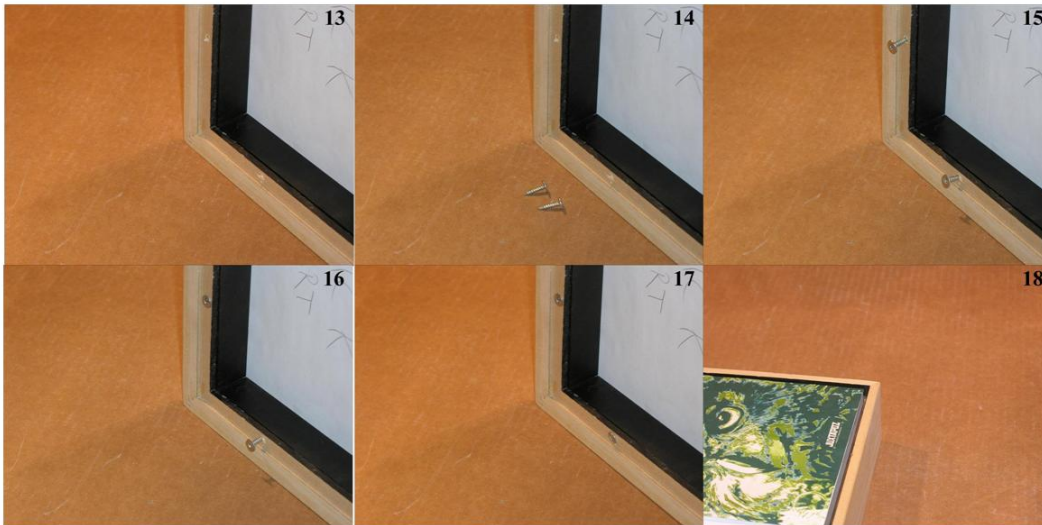
7) When all the screws have been set, the edges should be flush. (see below)



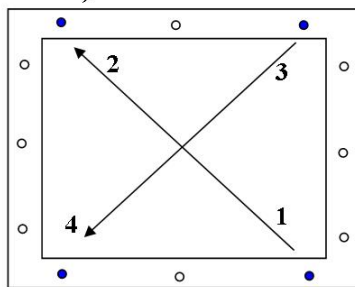
8,9 & 10) Now place the art and attached inset into the frame.

11 & 12) Acquire some card paper (3x5 cards work fine) and place these into the gap on both sides of each corner, this is done to evenly center the art inside the frame.





13) Now that you have the spacers in all the corners, flip the frame onto its side and get your pan head screws (see image#19) ready.  
 14 &15) place all the screws into the pre drilled holes.  
 16 &17) Begin driving the screws into the frame in the same order that you used for the inset. (see below)



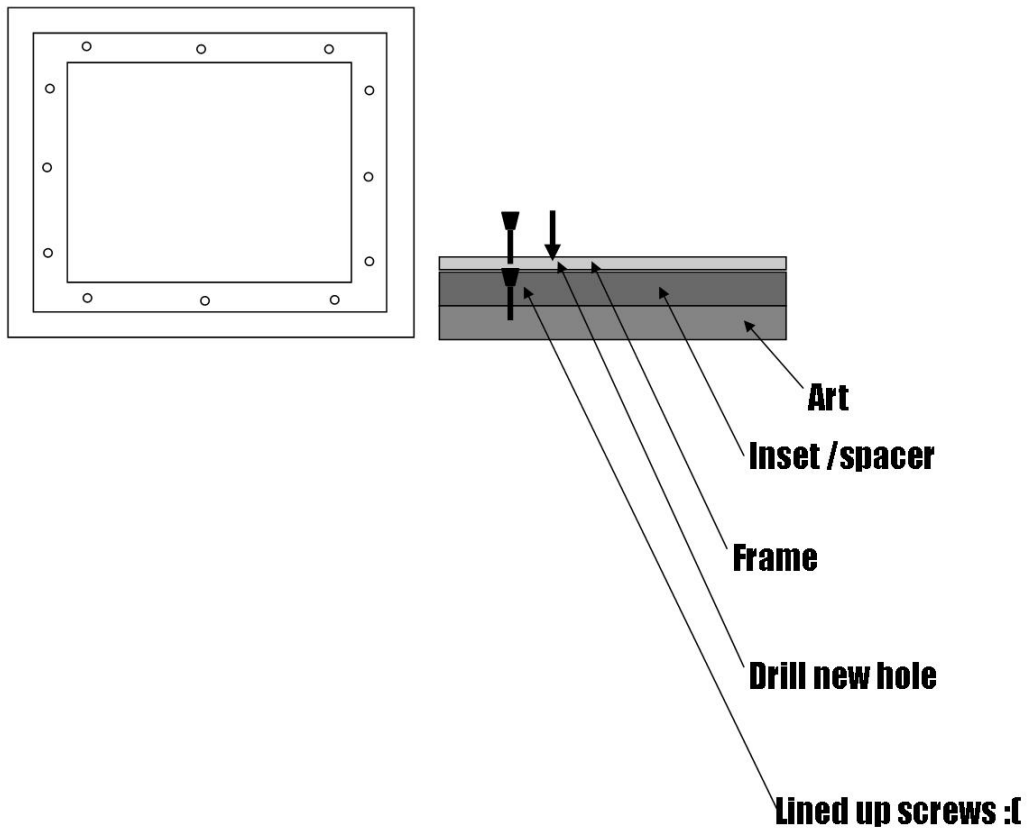
18) All done, remove the card paper spacers from the gap between the art and the frame.

19) The screw on the left is a “pan head screw”. The one on the right is a “flush set wood screw”



**Troubleshooting:**

There are times when two screw holes line up unintentionally, ie: you are attaching the frame to the inset and you realize that there is a screw underneath. In this situation, you have to make a new hole.



John Annesley Company

707 433-4238

1-888-471-4448

Fax 707 433-1831 Email: [john@johnannesley.com](mailto:john@johnannesley.com)